

## Bark Beetle Academy | Gainesville, Florida | May 7-11 2018

University of Florida Steinmetz Hall (Dept. of Entomology), room 2218. Map [here](#).

May 7, Monday

6:00-8:00PM registration and evening meet & greet  
at the [SpringHill Suites](#) conference room.

May 8 - Introduction, applied aspects, and morphology

morning (shuttle pick up time: 8:45)

- 9:00 Welcome and intro: What are bark and ambrosia beetles? (J. Hulcr)
- 9:30 The history and politics of bark beetle impacts (K. Klepzig)
- 10:30 Invasive bark beetles – an update from Washington (R. Rabaglia)
- 11:00 [www.barkbeetles.info](http://www.barkbeetles.info) – how to use it (T. Atkinson)

afternoon

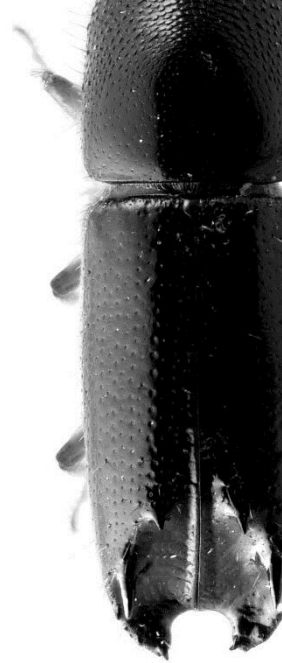
The first hands-on guided session in microscope lab

- 13:15 Online resources on bark and ambrosia beetles (J. Hulcr)
- 13:45 Scolytine morphological terminology: Find a character! (S. Smith)
- 14:30 Advanced characters used in keys (T. Atkinson)
- 15:30 S. L. Wood's key to genera – trial by fire (T. Atkinson)

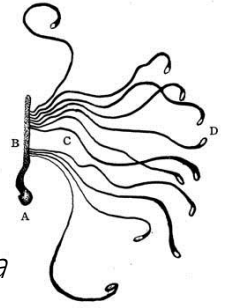
May 9 – Field trip, pests, and the beginning of identification

morning

- 9:00 (meet at 8:45) field trip: outbreak of the Southern pine beetle
  - o demonstration and discussion of management approaches
  - o bark beetle trapping
  - o manual techniques for bark beetle collecting
  - o how to submit a sample for expert diagnosis



A 交尾室  
B 母坑  
C 幼虫坑  
D 蛹室






afternoon (shuttle pick up time: 12:45)

13:15 Southern Pine Beetle biology and prevention (J. Eickwort)

14:00 The bad ambrosia beetles: *Xyleborus glabratus* and *Euwallacea fornicatus* (D. Carrillo)

14:45 Introduction to the Distributed Reference Collections of invasive bark beetles (J. Hulcr)

Practical training in identification of the world's 30 most important scolytine species with a synoptic collection and a manual, sponsored by the UN FAO , the USDA Farm Bill section 100007  and the Florida Department of Agriculture .

Evening (shuttle pick up time: 18:45)

19:00 Light-trapping of bark beetles and other insects at the Austin Cary Forest, and socializing.

May 10

morning (shuttle pick up time: 8:45)

9:00 field trip: outbreaks of two ambrosia beetles

11:00 optional: museum exhibit of bark beetle art

afternoon (shuttle pick up time: 12:45)

13:15 hands-on, guided identification

- Dendroctonus (Smith)
- Ips (Cognato)
- Xyleborini genera (Xylosandrus, Xyleborinus, Euwallacea, Xyleborus; Rabaglia & Fairbanks)
- Xyleborus species (Fairbanks)
- Euwallacea (Gomez)
- Hypothenemus (Johnson)

May 11

morning: (shuttle pick up time: 8:45)

9:00 Distributed Reference Collections workout

11:45 Post-test

afternoon: split in two groups, each participant's preference:

A) Field group: more beetle collecting

B) Lab group:

a. more guided identification

b. damage identification

c. personal collection identification and specimen swap

